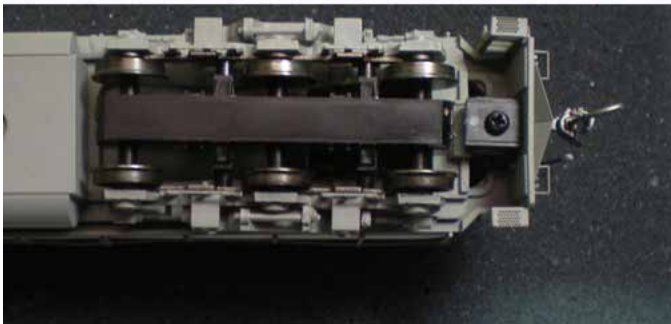


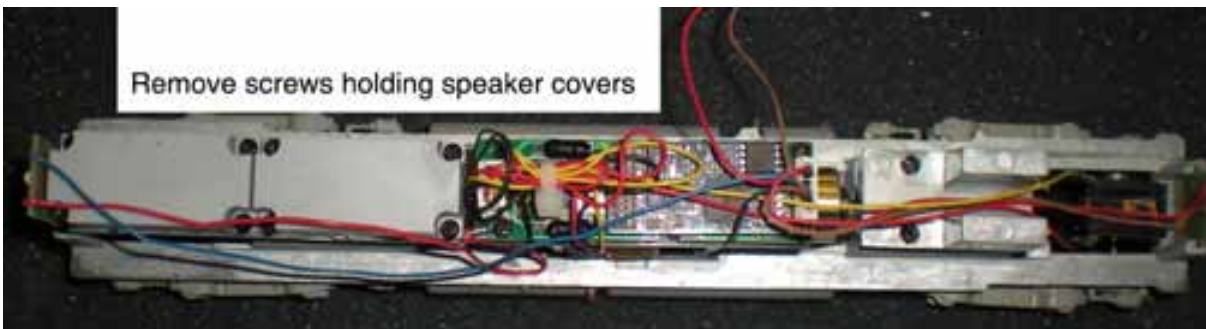
C636 replacement trucks, fuel tank and couplers

1. Remove the fuel tank. One screw in the middle and save the screw
2. Glue fuel fillers to the tank. Use plastic cement and apply glue from inside.
3. Slide fuel tank in place and fasten with the screw above. Do not over tighten.
4. Remove coupler pocket screws and couplers. Save the screws. Shim will not be used again.
5. Slide body from chassis. Be careful of wires and body details.
6. Sound Locos. Remove the speakers and/or speaker box.
Remove the weight under the speakers and/or speaker box.
7. Do this one end at a time.
Cut the zip tie holding the wires. Be careful do not cut wires. Pull the plugs out of the sockets
Spread the worm housing and it will snap up to release. Save housing and worm.
Remove the truck and replace with new truck. Replace worm and snap housing in place
8. On speaker / weight end. Pass plug through weight and fasten weight to frame
9. Plug both trucks into board
10. Fasten speakers and/or speaker box to the weight.
11. Rest body on chassis and track test.
12. Gather wires and tape down - I like Kapton tape. Standard electrical tape is not recommended.
13. Slide body on chassis.
14. Place coupler shim #12152 on coupler mounting boss of frame.
I like to use a small drop of glue
15. Slide KD under shank coupler and box assembly into place. Fasten with screw you removed before.

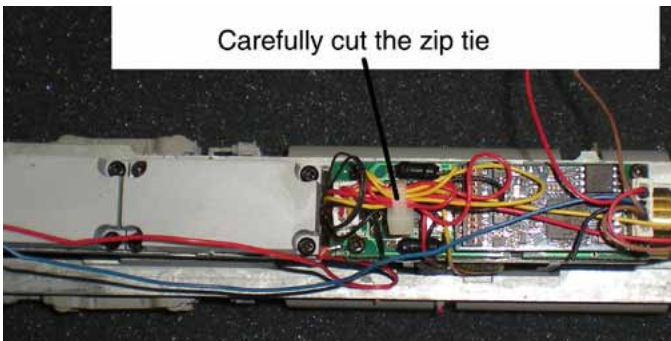
Place loco on soft foam or cloth
Remove the coupler mounting screws on both ends



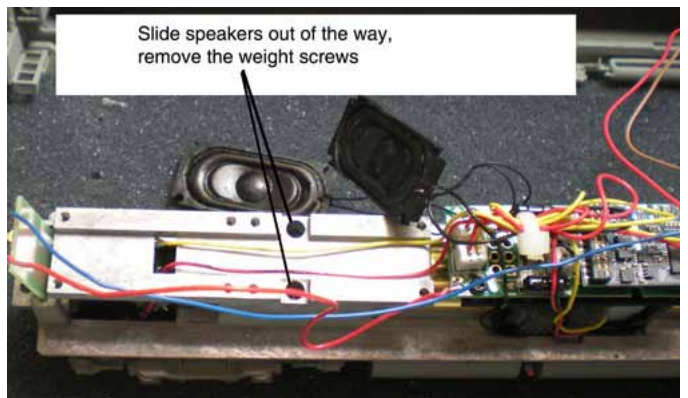
Remove screws holding speaker covers



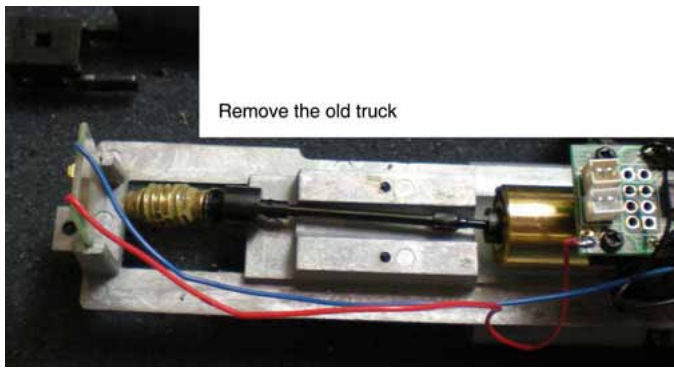
Carefully cut the zip tie



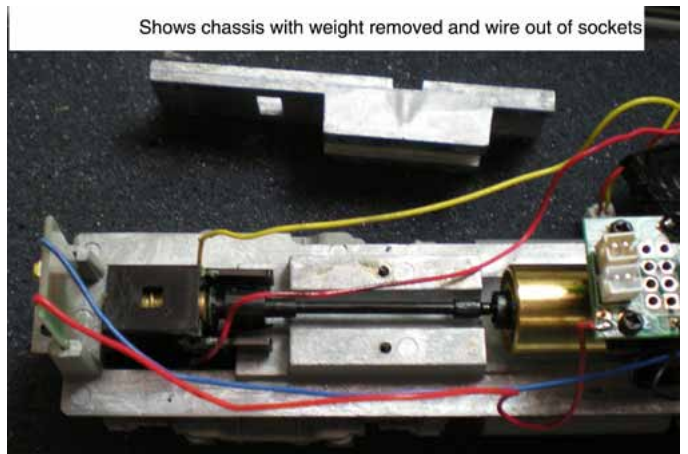
Slide speakers out of the way, remove the weight screws



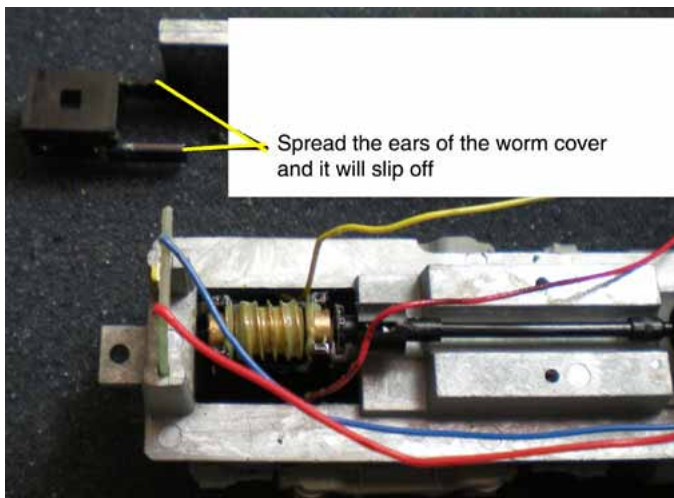
Remove the old truck



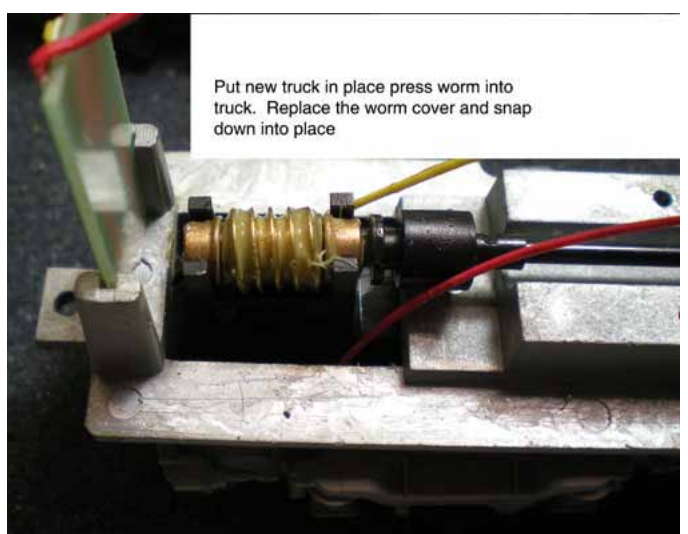
Shows chassis with weight removed and wire out of sockets



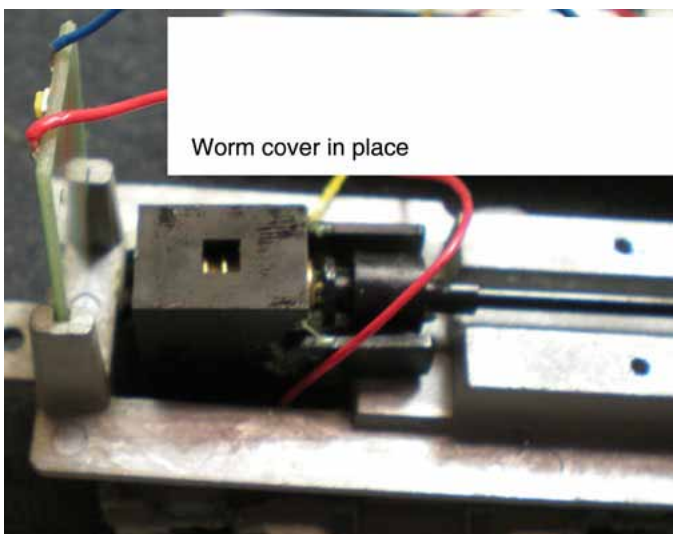
Spread the ears of the worm cover and it will slip off



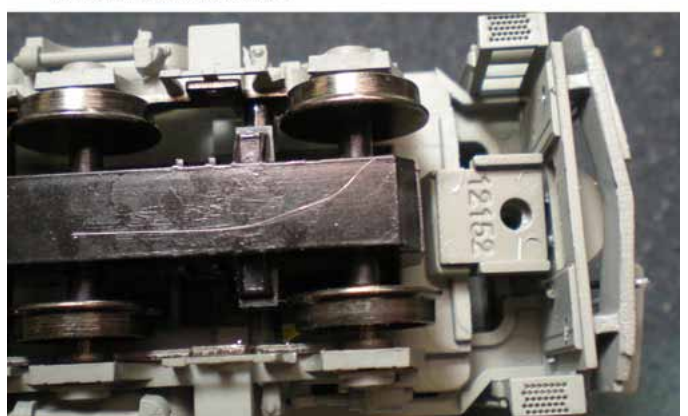
Put new truck in place press worm into truck. Replace the worm cover and snap down into place



Worm cover in place



Place new spacer on frame. This could be held in place with a small drop of glue.
Place the under shank coupler in place and fasten with the old screw.



Glue the fuel fills in place.
Replace the fuel tank.

